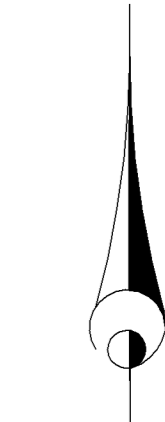
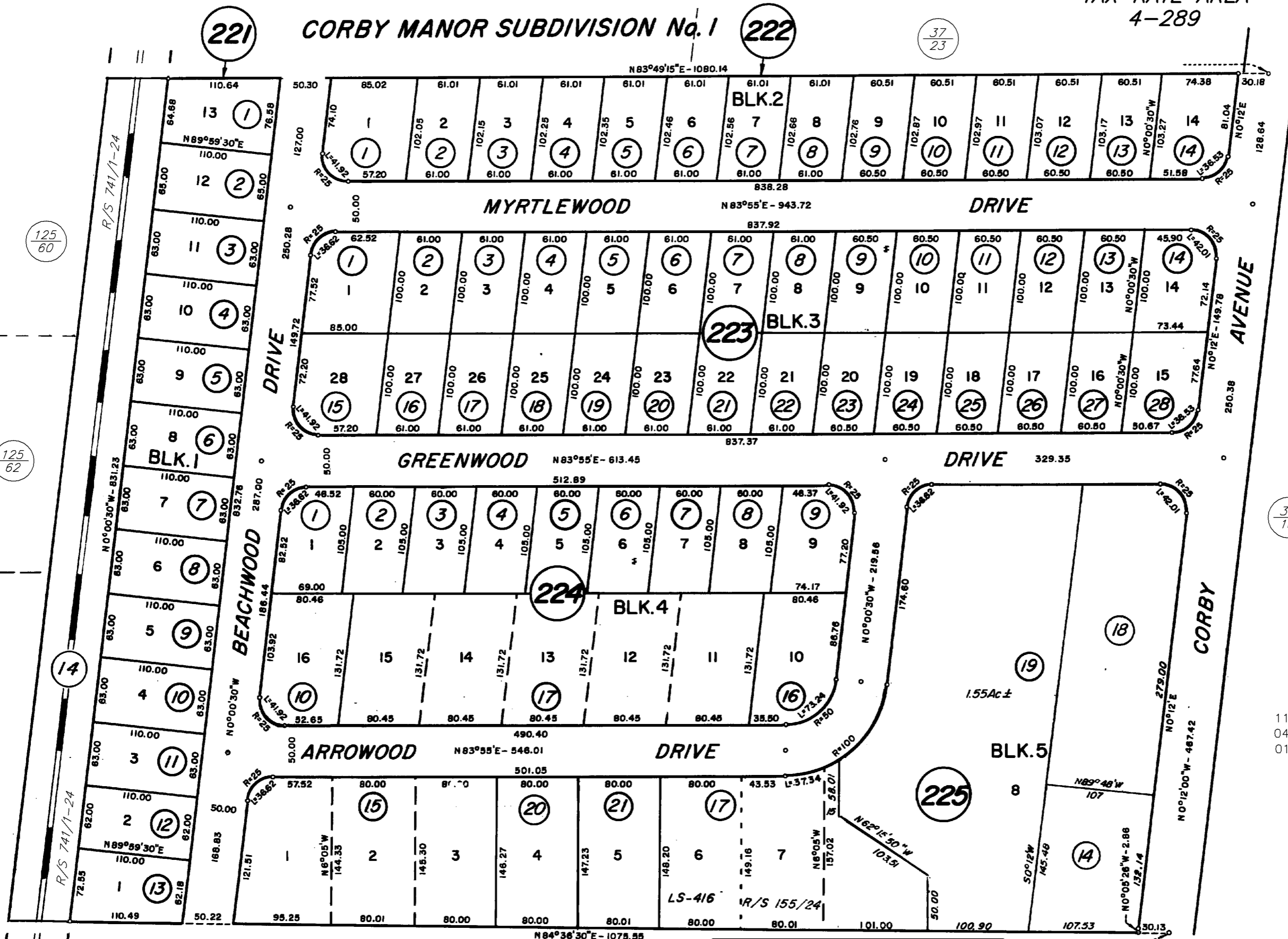


COUNTY ASSESSOR'S PARCEL MAP

CORBY MANOR SUBDIVISION No. 1

TAX RATE AREA
4-289

37-22



SCALE: 1"=100'

REVISED
11-16-78
04-23-97=14(221)-LSL
01-19-11=R/S-KB

NOTE: Assessor's parcels do not necessarily constitute legal lots. To verify legal parcel status, check with the appropriate city or county community development or planning division.

NOTE: This map was prepared for Assessment purposes only and does not indicate either parcel legality or a valid building site. No liability is assumed for the accuracy of the data delineated. The acreages are based on the information supplied to the Assessor (i.e. recorded survey maps, recorded deeds, prior assessment maps, etc.)

Assessor's Map Bk. 037, Pg. 22
Sonoma County, Calif. (ACAD)

HYBRID 1-19-11 KB